

SKYWORTH

Lead the future

CASA SERIES

REFRIGERATOR



OWN A LUXURY AT HOME

DESIGN INSPIRED BY PRESTIGIOUS CAR BRAND

AWARDS RECOGNITION

EXCELLENCE QUALITY • MODERN DESIGN • INNOVATIVE TECHNOLOGY



2018 China Top 10 Washing Machine Export Award



2022 - 2025 AAAA Grade Good Standardizing Practice Award

QUALITY ALWAYS MATTERS

With the commitment toward excellence, we meticulously produce each unit, incorporate the quality of every details.



2020 - 2023 China Quality Inspection Award



2020 - 2023 Consumer Good Quality Reputation Award



2020 - 2023 Leading Brand in Top Quality Management Award



2020 - 2023 China Quality Inspection Award



2019 Red Star Design Award

SOPHISTICATED DESIGN

We incorporate sleek sophisticated & simple design, showcasing a seamless integration of form and function in our products.

LEADING THE INNOVATIVE TECHNOLOGY

The core of our philosophy is to continuously innovate what is possible, with each design element meticulously produced to enhance efficiency and elevate convenient function and incorporate high quality product.



2016 Hi-Tech Enterprise Award



2019 IoT Smart Technology of China Refrigerator Industry Award

About SKYWORTH Group

A Chinese multinational corporation established in 1988 in Shenzhen. SKYWORTH design, manufacture and sell televisions, smart electrical appliances, and home appliances. SKYWORTH Group has been among the top 100 Chinese electronics companies and listed in Fortune China 500 for years.

SKYWORTH Electric Co. Ltd. was established in 2013, which specialized in the R&D, manufacturing and marketing of home appliances such as refrigerator, chest freezer, and washing machine. It is the third largest industrial company in SKYWORTH Group, with annual turnover of nearly 5 billion RMB.

Adhered to technology leadership & quality, SKYWORTH owns a refrigerator and a washing machine R&D center with 331 patents obtained. With multiple years of development, SKYWORTH has won several awards such as National Hi-Tech Enterprise, National Recognized CNAS & SGS Laboratories, and Top 10 Washing Machine Export Enterprises in China.

SKYWORTH is committed to develop friendly usage, safety priority, and efficient products to create consistently great customer experience.



SKYWORTH Refrigerator

CASA SERIES

Side by Side



CASA SERIES

Multi Door



Double Door



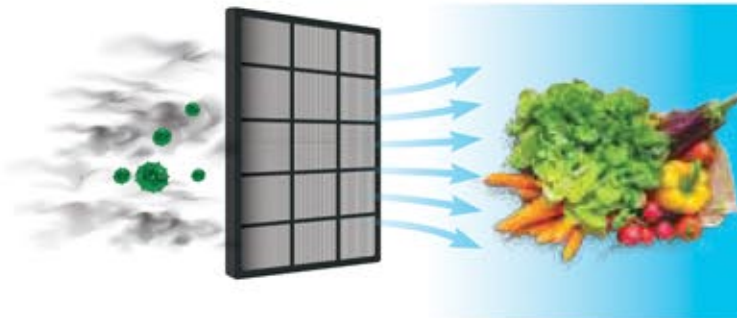
Unique Features



Nano Ag+ Filter

Effectively reduce bacteria and odours in the refrigerator to ensure the freshness of foods.

Bacteria and odours ▶ Nano Ag+ Filter ▶ Fresh Food



Available Model: **SRM-496WPGQ | SBS-558WP**



Metal Cool Technology

Maintain the freshness of the vegetables and fruits with Metal Cool Technology that overlaid with a high quality stainless steel at the rear wall of the fridge to ensure cool air is distributed evenly from the inside out.

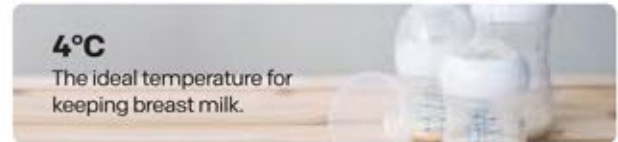


Available Model: **SRM-500WPGQ | SRM-496WPGQ**



ProFresh Room

A special dedicated room with 3 temperature available to keep the freshness of the food at its finest.



Available Model: **SRM-500WPGQ | SRM-496WPGQ**



ACE Dynamic Power Engine

Kill virus, bacteria, keep vegetables fresh, and remove bad and harmful odour more than 99%.



Available Model: **SRM-500WPGQ**



UV Room

Photosynthetic Light and UV technology simulate the natural sunlight to keep the food ingredients inside the refrigerator last longer in freshness. As a photocatalyst, titanium dioxide can effectively degrade toxic and harmful gases in the air under the ultraviolet light and visible light. It also has the functions of deodorizing, anti-pollution, and purifying air.



Available Model: **SRM-500WPGQ**



Duo Clear LED Light

Easy to locate even the smallest items at the corner, in both **fridge** and **freezer**.



Available Model:

SBS-558WP



ProSilent Inverter Technology

Equipped with an Inverter compressor and an Inverter fan, the fridge will be operating in ultra-silent mode and energy saving with ECO Care refrigerant. It is designed to improve the longevity of the refrigerator with automatic precise temperature control.



Available Model:

**SRM-500WPGQ | SRM-496WPGQ |
SRM-418CB | SBS-558WP | SBS-408WP**

Features



Multi AirFlow

A stream of cool air flows through a series of vents located on every shelf level to create an evenly cooled environment. This helps to maintain an ideal temperature to keep the food fresh.



Total No Frost

Prevents ice and moist to build up in both the fridge and freezer to retain the food quality.



FlexiFloor

Spill proof glass shelves withstand heavy items and easy clean up. FlexiFloor can be adjustable to accommodate large or small items according to your needs and keep your items organized.



Fresh Room

Protects your greens and anything else that can lose moisture quickly. Store ethylene-sensitive fruits and vegetables, like broccoli, cauliflower, citrus, cucumbers, eggplant, lettuces, raspberries, squash, strawberries, and sweet potatoes longer and fresher.



BigStore

Keep big bottles and large containers cold and chill in the spacious and convenient BigStore area.



Clear LED Light

Easy to locate even the smallest items at the corner.



Sleek Design

Modern and elegant design with recessed door handle enhance the good looks of the kitchen.



FlexiTwist Ice Maker

Effortless twist to enjoy a full tray of ice cubes for your drinks. Easily remove to create more storage space in the freezer.



Door Alarm Buzzer

Door alarm triggered if the refrigerator door is left open for long time, This helps to save electricity bill and keep foods fresh.



Smart LED Light

Easy to locate even the smallest items at the corner.



Electronic Smart Control

Sensing the temperature and maintaining it at a pre-defined point. Achieve precise and consistent refrigerator temperatures thanks to Electronic Smart Controls which provide easy adjustments.

Smart Mode : Adjust the temperature automatically according to the ambient temperature and temperature inside the refrigerator, saving you time and bill.

Holiday Mode : The fridge and freezer compartment will adjust to suitable temperature automatically, prevent from wasting energy when you're away from home for more than a day or two.

Quick Cooling Mode : Enable fridge temperature to reach the lowest quickly. Recommended to use when a lot of food put in the fridge at once.

Quick Freeze Mode : To freeze the food in a short time to preserve the flavour and freshness of the food.



Rat Guard

The back of the refrigerator is guarded with an anti-rat cover to protect electrical wiring being damaged cause by rats.



Anti Scratch Glass Door

Tough scratch and dent resistant. Stylish and glossy sheen design that fit any kitchen concept.



MoistFresh Room

A dedicated private room with adjustable humidity level control to prolong the freshness of fruits & vegetables.



Multi Door Refrigerator

CASA SERIES

SRM-500WPGQ

Gross Capacity 588L

SPECIAL EDITION



- ProFresh Room
- Metal Cool Technology
- ACE Dynamic Power Engine
- UV Room



CASA SERIES

SRM-500WPGQ

Gross Capacity 588L



Brocade Blue adopted from the concept of traditional Chinese luxury silk brocade, integrates classic craftsmanship with modern technology to show the brocade on the glass door.

3D Feel

8 layers of panels to showcase the beauty of brocade blue design.

Anti Scratch

Anti Finger Print



A luxury door handle specially designed to have the leather quality touch feel.



Elegant body with smooth outline design.

ACE Dynamic Power Engine



4°C

The ideal temperature for keeping breast milk



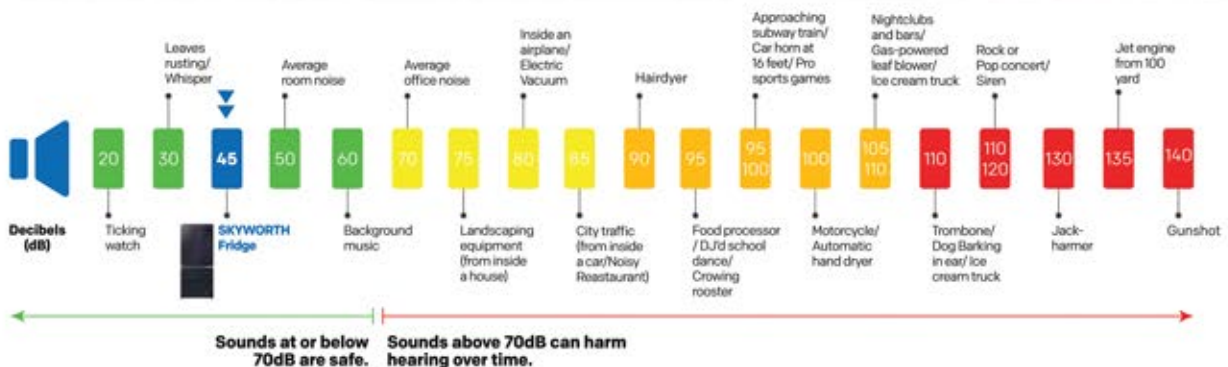
0°C

Prolong the freshness of vegetables



-3°C

Soft frozen for meat, no need wait the meat to unfrozen





Multi Door Refrigerator

CASA SERIES

SRM-496WPGQ

Gross Capacity 588L



- Nano Ag+ Filter
- Metal Cool Technology
- ProFresh Room



CASA SERIES

SRM-418CB

Gross Capacity 498L



Side by Side Refrigerator



CASA SERIES

SBS-558WP

Gross Capacity 636L



- Nano Ag+ Filter
- Duo Clear LED Light



CASA SERIES

SBS-408WP

Gross Capacity 470L



- Smart LED Light





Double Door Refrigerator

SRD-495WT

Gross Capacity 482L



SRD-265WT

Gross Capacity 258L



SPECIFICATIONS



Model No.		Multi Door Refrigerator			Side by Side Refrigerator		Double Door Refrigerator	
		SRM-500WPGQ	SRM-496WPGQ	SRM-418CB	SBS-558WP	SBS-408WP	SRD-495WT	SRD-265WT
Capacity	Gross Capacity (L)	588	588	498	636	470	482	258
	Net Capacity (L)	500	496	424	541	400	410	220
	Refrigerator Net Capacity (L)	338	334	282	343	232	313	158
	Freezer Net Capacity (L)	162	162	142	198	168	97	62
General Feature	Door Material	Glass	Glass	Glass	Metal	Metal	Metal	Metal
	Color	Brocade Blue	Black	Black	Dark Silver	Dark Silver	Dark Silver	Dark Silver
	Climate Class	T	T	T	T	T	T	T
	Refrigerant	R600a	R600a	R600a	R600a	R600a	R600a	R600a
	Lamp Power (W)	5	5	1.5	4	1.5	1.5	1.5
	Adjustable Leg	Yes	Yes	Yes	Yes	Yes	Yes	Yes
	Handle	Recessed	Recessed	Recessed	Recessed	Recessed	Recessed	Recessed
Special Feature	ProSilent Inverter Technology	Yes	Yes	Yes	Yes	Yes	-	-
	Multi AirFlow	Yes	Yes	Yes	Yes	Yes	Yes	Yes
	Total No Frost	Yes	Yes	Yes	Yes	Yes	Yes	Yes
	FlexiFloor	Yes	Yes	Yes	Yes	Yes	Yes	Yes
	MoistFresh Room	-	-	-	-	-	Yes	Yes
	Fresh Room	Yes	Yes	Yes	Yes	Yes	-	-
	BigStor	Yes	Yes	Yes	Yes	Yes	Yes	Yes
	LED Light	Smart LED Light	Smart LED Light	Smart LED Light	Duo Clear LED Light	Smart LED Light	Clear LED Light	Clear LED Light
	Sleek Design	Yes	Yes	Yes	Yes	Yes	Yes	Yes
	FlexiTwist Ice Maker	Yes	Yes	Yes	Yes	Yes	Yes	Yes
	Door Alarm Buzzer	Yes	Yes	Yes	Yes	Yes	-	-
	Electronic Smart Control	Yes	Yes	Yes	Yes	Yes	-	-
	Rat Guard	Yes	Yes	Yes	Yes	Yes	-	-
	Anti Scratch Glass Door	Yes	Yes	Yes	-	-	-	-
	ProFresh Room	Yes	Yes	-	-	-	-	-
	Metal Cool Technology	Yes	Yes	-	-	-	-	-
	Nano Ag+ Filter	-	Yes	-	Yes	-	-	-
ACE Dynamic Power Engine	Yes	-	-	-	-	-	-	
UV Room	Yes	-	-	-	-	-	-	
Refrigerator Compartment	Shelf (No.)	3	3	3	4	4	3	2
	Door Balcony (No.)	6	6	4	3	3	4	2
	Crisper (No.)	1	1	1	2	1	1	1
	Crisper Cover (No.)	1	1	1	1	1	1	1
Freezer Compartment	Drawer (No.)	4	4	2	2	1	-	-
	Shelf (No.)	-	-	-	4	4	1	1
	Door Balcony (No.)	-	-	-	3	-	2	1
Dimensions (W*D*H)	Without Box (mm)	833*660*1890	833*660*1890	753*680*1846	913*670*1785	836*610*1712	720*655*1760	554*588*1445
	With Box (mm)	910*700*1950	910*700*1950	840*750*1936	1002*742*1860	892*646*1770	755*720*1820	585*630*1511
Weight	Without Box (kg)	103	103	91	84	66	74	41
	With Box (kg)	113	113	101	95	75	80	45


SKYWORTH


Lead the future

2022-2023 Global Brand Ambassador of SKYWORTH
Liu Yifei



Skyworth Development Malaysia Sdn. Bhd.(1210539-A) Block B, No.13, Jalan Pelukis U1/46, Temasya Industrial Park,40150 Shah Alam, Selangor Darul Ehsan, Malaysia.

 Skyworth Malaysia

 skyworth_my

 <http://www.skyworth.com.my>

 Customer Careline : 1-800-888-123

The product pictures, functions and technologies of this promotional material are for reference only. For specific information, please refer to the product and instruction manual. SKYWORTH reserves the right to change the appearance, model, function and specifications of the product without notice.